

## LA-8 WIRING INSTRUCTIONS

### POWER INPUT:

6 - 13 Volt FILTERED D.C. power supply. If the power supply being used is less than 9 VDC then, R-30 must be cut out from the rear of the board. The LA-8 draws 165 mA in the standby mode and 285 mA if all alarms are activated.

### ZONE INPUTS:

Zones can be wired as either N.C. or N.O. loops. Closed loop resistance should not exceed 1000 ohms.

### NORMALLY CLOSED LOOP INPUTS:

The LA Annunciator is shipped with all of the input loops set up to be used as normally closed loops. To use a zone as a N.C. loop wire the LA as follows.

<b>ZONE 1 - T4 - 1 &amp; 2</b>	<b>ZONE 3 - T5 - 1 &amp; 2</b>	<b>ZONE 5 - T2 - 1 &amp; 2</b>	<b>ZONE 7 - T3 - 1 &amp; 2</b>
<b>ZONE 2 - T4 - 3 &amp; 4</b>	<b>ZONE 4 - T5 - 3 &amp; 4</b>	<b>ZONE 6 - T2 - 3 &amp; 4</b>	<b>ZONE 8 - T3 - 3 &amp; 4</b>

If a zone is not being used, then a jumper should be installed across it's input terminals or cut the open loop jumper for that zone.

### NORMALLY OPEN LOOP INPUTS:

To use a zone as a N.O. loop, wire the LA as follows and cut the indicated jumper. (NOTE: T1-4 = Vcc)

<b>ZONE 1 - T4-1 &amp; T1-4 CUT J7</b>	<b>ZONE 5 - T2-1 &amp; T1-4 CUT J1</b>
<b>ZONE 2 - T4-3 &amp; T1-4 CUT J8</b>	<b>ZONE 6 - T2-3 &amp; T1-4 CUT J2</b>
<b>ZONE 3 - T5-1 &amp; T1-4 CUT J9</b>	<b>ZONE 7 - T3-1 &amp; T1-4 CUT J3</b>
<b>ZONE 4 - T5-3 &amp; T1-4 CUT J10</b>	<b>ZONE 8 - T3-3 &amp; T1-4 CUT J4</b>

### ZONE BYPASS INPUTS:

To use the zone bypass inputs, connect a N.O. switch between the indicated terminal and T1 pin 6 (common). When the zone bypass switch is closed (bypass position) the zone will be deactivated (no alarms reported).

<b>ZONE 1 - T4-5</b>	<b>ZONE 3 - T5-5</b>	<b>ZONE 5 - T2-5</b>	<b>ZONE 7 - T3-5</b>
<b>ZONE 2 - T4-6</b>	<b>ZONE 4 - T5-6</b>	<b>ZONE 6 - T2-6</b>	<b>ZONE 8 - T3-6</b>

### ZONE OUTPUTS:

Each zone provides an individual solid-state output which goes low on alarm. Each output will sink up to 100mA. To use a zone output wire between T1-4 (Vcc) and the indicated I/O pin. The zone outputs follow the zone indicator.

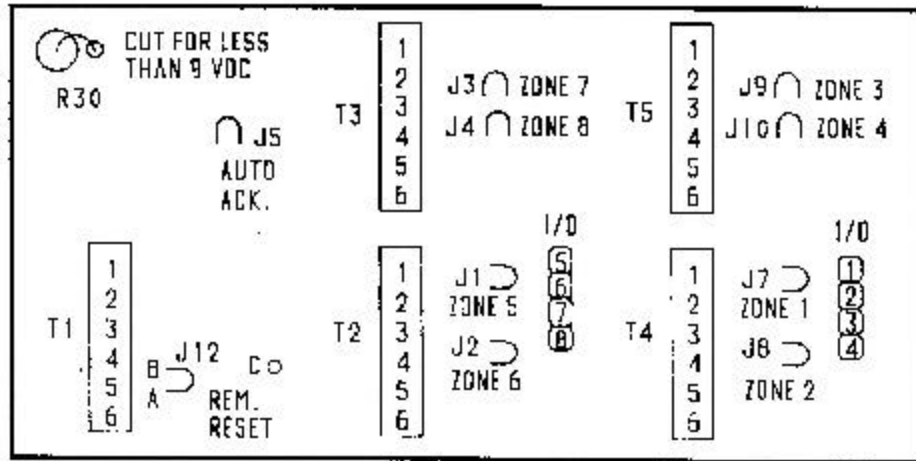
<b>ZONE 1 - I/O 1</b>	<b>ZONE 3 - I/O 3</b>	<b>ZONE 5 - I/O 5</b>	<b>ZONE 7 - I/O 7</b>
<b>ZONE 2 - I/O 2</b>	<b>ZONE 4 - I/O 4</b>	<b>ZONE 6 - I/O 6</b>	<b>ZONE 8 - I/O 8</b>

To use the zone I/O connectors simply place a wire (22 AWG ) in the appropriate slot and push down with a small slotted screwdriver. Insure that the connector is placed on the pins with the proper wire going to the correct zone I/O.

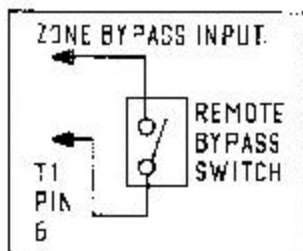
### TESTING:

After the installation is completed each loop on the unit should be tested to insure proper operation. Also any options that have been set such as Auto/Ack, bypass inputs or individual zone outputs should be tested for proper operation.

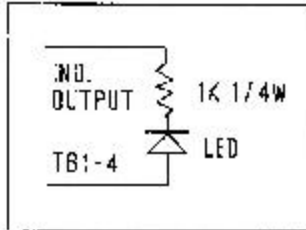
### LA-8 FIELD WIRING DIAGRAM



REAR VIEW



TYPICAL REMOTE BYPASS INPUT



TYPICAL IND. OUTPUT (LESS THAN 100mA)

