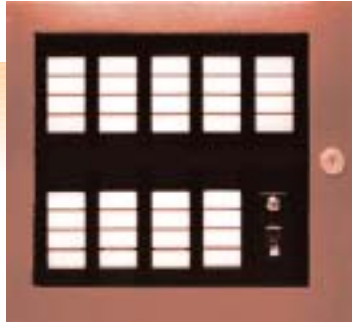
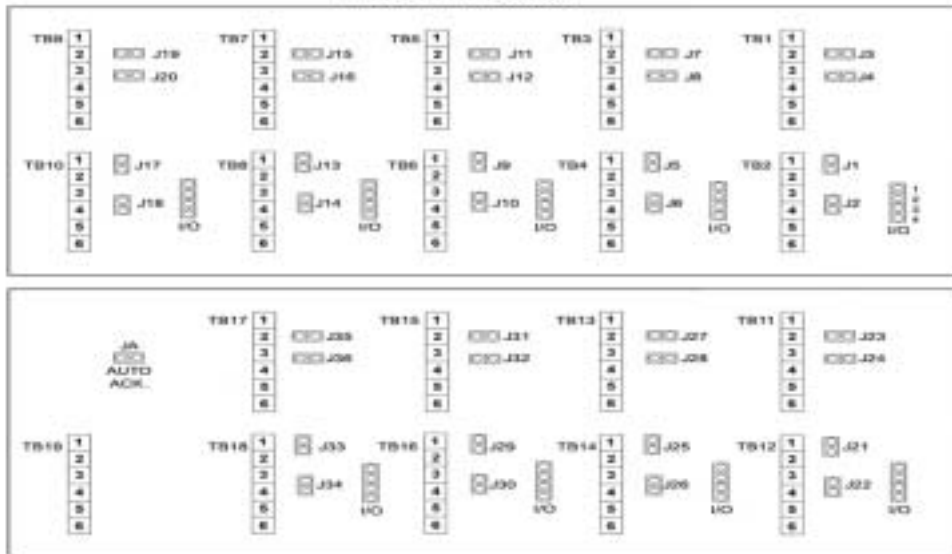


Keltron MLA Series Mini Latching Annunciators

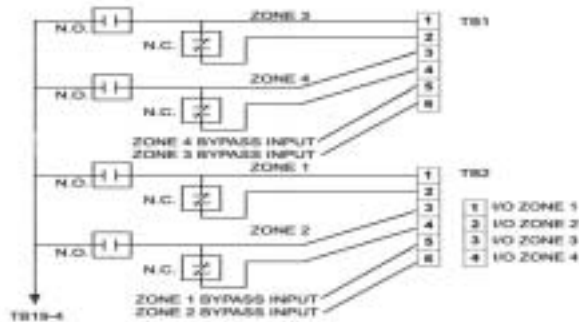


Enables instant event identification
 Provides reliable monitoring
 Suitable for small spaces

MLA-36 FIELD WIRING



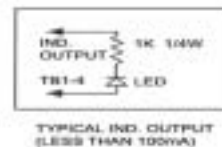
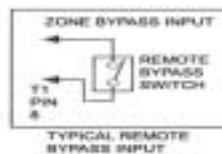
- TB1 ZONES 3 & 4
- TB2 ZONES 1 & 2
- TB3 ZONES 7 & 8
- TB4 ZONES 5 & 6
- TB5 ZONES 11 & 12
- TB6 ZONES 9 & 10
- TB7 ZONES 15 & 16
- TB8 ZONES 13 & 14
- TB9 ZONES 19 & 20
- TB10 ZONES 17 & 18
- TB11 ZONES 23 & 24
- TB12 ZONES 21 & 22
- TB13 ZONES 27 & 28
- TB14 ZONES 25 & 26
- TB15 ZONES 31 & 32
- TB16 ZONES 29 & 30
- TB17 ZONES 35 & 36
- TB18 ZONES 33 & 34
- TB15-1 RELAY COM.
- TB15-2 RELAY N.C.
- TB15-3 RELAY N.O.
- TB15-4 N.O. CONTACT COM.
- TB15-5 +12 VDC FILTERED
- TB15-6 +12 VDC POWER SUPPLY



The MLA-36 requires a 12 VDC .5 Amps filtered power supply for proper operation.

Zones can be wired as either N.C. or N.O. loops. Closed loop resistance should not exceed 1K ohms.

The LA is shipped with all of the inputs set for N.O. To set a loop for N.C., remove the appropriate jumper. If a zone is not being used, then remove the jumper for that zone, which will deactivate the zone.



Keltron develops and manufactures secure, reliable, UL-listed fire and security alarm response management systems and components for the municipal and proprietary life safety markets. Products include radio fire alarm, coded fire alarm and high-line security systems, digital alarm receivers, universally compatible fire alarm control panel networking solutions and a full line of alarm annunciators. For more information, visit www.keltroncorp.com or contact us at 781-894-8710, or info@keltroncorp.com.