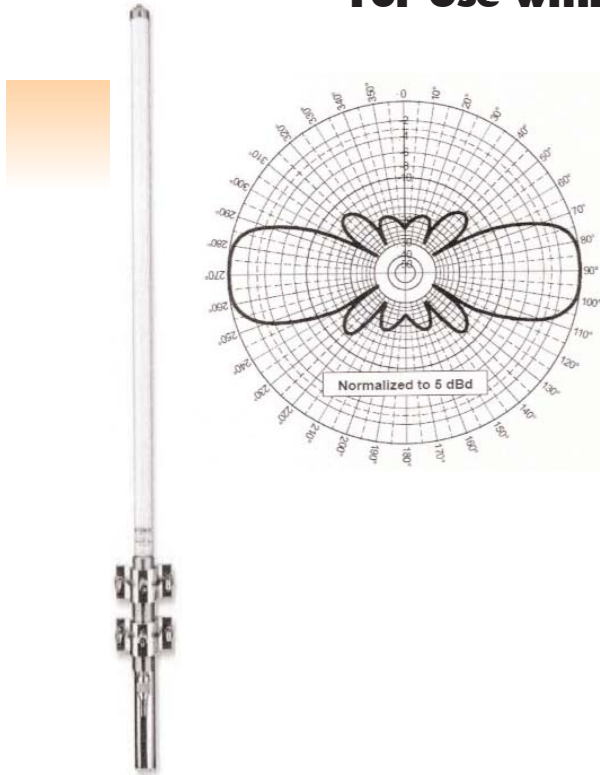


Keltron 10R7216-40 Central Station/High Gain Antenna For Use with Keltron RF7500 Radio Receiver



High Gain

Outdoor Applications

406-416 MHz

Features

- High-performance, tri-linear design
- High gain for critical locations
- UV-treated radome resists sun damage
- Excellent for outdoor applications
- 100% tested on a network analyzer
- Fast easy mounting
- Special package includes:
 - Ground radials
 - Universal mount and hardware

Technical Specifications

Electrical

- Frequency range: 406-416 MHz
- VSWR: < 2.0:1 maximum
- Nominal gain: approximately 5 dBd
- Maximum power: 100 Watts
- Nominal impedance: 50 Ohms
- Polarization: vertical
- Radiation/pattern: omni-directional
- Half-power beamwidth: 40° x 360°
- Termination: 'N' female connector

Mechanical

- Antenna length: approximately 72^{1/2} in.
- Diameter: 1.310 in.
- Weight: < 3 lbs.
- Wind resistance: 125 mph, 85 mph with ice
- Equivalent flat plate area: 0.6959 sq. ft.
- For indoor use cable length cannot exceed 25' - recommended cables 10R7210 or 10R7225
- For outdoor use RG8/U cable length 25-50'

Keltron develops and manufactures universally-compatible, UL listed life safety event management systems for multi-building facility and municipal markets. Solutions include Ethernet, active network radio, distributed multiplex, digital communicator/receivers, and direct wire signaling systems. This document is not intended for installation or maintenance purposes. All specifications are subject to change without notice. For more information visit www.keltroncorp.com or contact us at 781-894-8710. Made in the USA.

© 2016 Keltron Corporation. All rights reserved.